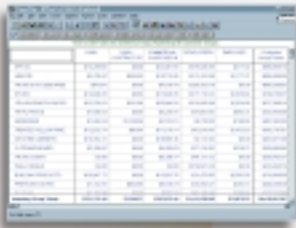


Executive Information System





A screenshot of a software application window displaying a data table. The table has multiple columns and rows of numerical data, typical of a financial or inventory management system. The window title bar is partially visible at the top.

We know your world is full of numbers –
number of items on hand, number of return
customers, number of sales in one month,
number of dollars made... There is number
after number to consider!

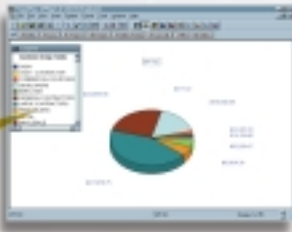
We Understand Your World



We also know that how you deal with these numbers has a huge impact on the success of your business. We understand how important it is to analyze these numbers, and other data your business generates, to make smart decisions.

But sometimes, the numbers don't add up. Sometimes, it's hard to know which numbers are relevant. Sometimes, it's difficult to explain what the numbers mean to everyday business.

Enterprise's EIS is a powerful tool to help you make sense of your critical business information. It's a plug-in software tool, which, by taking and organizing information from your point-of-sale system, transforms raw data into user-friendly reports. EIS turns all the numbers into clear, meaningful pieces of information that can be used to analyze and scrutinize your operations.



ORGANIZATION =

EFFICIENCY =

GREATER PRODUCTIVITY =

INCREASED PROFITABILITY

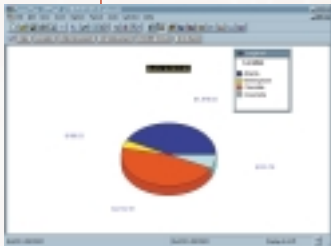
EIS extracts information, nightly, from your point-of-sale system and converts it to indexed, multi-dimensional databases – one for Sales and one for Inventory. We also have a new General Ledger module for use with



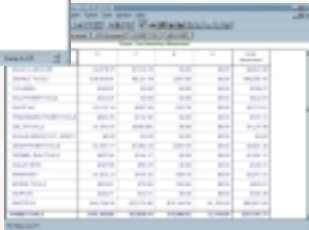
A screenshot of a data table with multiple columns and rows. An arrow points from the text 'General Ledger module' to a cell in the table.

most point-of-sale systems. These databases feature a quick and easy interface, so that you don't need to write programs or set up complicated configurations to create the reports you need. The data is always available through EIS over a network to all managers who can then design whatever report they need to. EIS replaces the old way of reporting (one person using a standard report writer to extract information) with faster, accurate, and more accessible reporting.

Looking at the information in the databases is simple. You can look at the big picture, like your company's yearly sales, or drill down to the smallest detail, such as a specific item's performance. Target specific relationships, such as sales by location by product. Re-sort the information however you'd like it presented. And, when you've got the data you need, save it as a Microsoft® Excel spreadsheet, an HTML file for viewing over your corporate intranet, or one of several other available formats.



View your data as rows and columns in the crosstab view. Then, instantly display results as a pie chart, bar graph (four types), line chart (two types), scatter chart, or a correlation report.



A screenshot of a data table in a software interface, showing multiple columns and rows of data.

The EIS General Ledger module goes a step further, using data from your company's general ledger as a foundation for a database that makes detailed financial analysis simple. Information is presented by date range, account group, profit center, actual account balances, or budget amounts. Again, take a look at the whole balance sheet or research a specific account. Each detail line includes the Purchase Order Number, Vendor Invoice Number, Vendor Name, and even the check number! It's easy to group and analyze information, and layer reporting.

Three report generators let you access your data with maximum flexibility.

- If you don't have time to juggle data to get the information you need, use the Portfolio module to page through a personalized collection of slide-show reports.
- If it's your job to analyze and present customized data, the Explorer module is for you. Explorer is used for examining data quickly and easily, at any level of detail. Display summary rows, columns, and layers that are updated as you drill down and up. And, slice and dice new data relationships.
- If you need more customized reports, use the Reporter module to build your own interactive templates. Perform calculations on your data; for example, view returns as a percentage of net sales.

All three modules - Portfolio, Explorer, and Reporter - are part of the EIS base system.

Use EIS for sales analysis, inventory management, and financial reporting. The reports you generate will be simple answers to your most complex questions!



Call us at 1.800.569.6309
visit our website at
www.ecs-inc.com,
or e-mail us at info@ecs-inc.com

We understand your world, a world where time is money.

e
n
t
e
r
p
r
i
s
e

Success Stories

Doug Jones, VP of Operations of Seigle's, says, "EIS gives us the information we need to improve marketing, increase business, reduce costs and increase operational efficiency. EIS is a great management tool. Seigle's loves it. And, our sales team benefits tremendously from it."

Buster Davis, Manager at Magbee Contractor Supply, says, "EIS has been a terrific plug-in software application for us here at Magbee Contractor Supply. We constantly use it to develop in-depth sales reports that allow us to analyze customer buying relationships. In addition, EIS allows us to examine different sales area information by location in a way that allows our management staff to see rapid changes in sales area volume almost instantly. With its built in charting capabilities, we can easily design sales charts that show a graphical representation within different sales areas. EIS has proven to be a very effective data-mining solution in being able to get information out of our point-of-sale system and put it in a useful report format that can be easily exported to other applications, such as Microsoft Excel. We have multiple online EIS data warehouse cubes that we can tap into for historical information when needed. All I can say about EIS is that, if you don't have it, you need to get it!"

Bill Shelly, President of Shelly Enterprises, says, "The information we get from the Enterprise EIS system has allowed us to completely re-focus our sales force, resulting in a more effective marketing strategy. EIS has also given us the insight we needed to revamp our sales compensation plan, so that it rewards our sales people more effectively. The inventory module gives us the information we need to quickly recognize areas of opportunity. It also helps us spot potential problem areas before they cost us big money!"

About Enterprise

Enterprise Computer Systems, Inc. is the leading systems integrator providing software, hardware, and services to the shelter industry. Regardless of the type of building materials business you operate, one of our point-of-sale products will cover your needs from the sales counter to the back office.

Enterprise offers other plug-in products and services to enhance your Enterprise or non-Enterprise point-of-sale system. These include:

E-commerce / Electronic Trading

Dispatch & Delivery Systems

Professional Estimating®

CAD

Radio Frequency Products

Document Management Systems

Network Services

World-class software and hardware support available via the phone or the Web 24 hours a day, 7 days a week, 365 days-a-year.



Enterprise
Computer Systems, Inc.

One Independence Pointe
Post Office Box 2383
Greenville, SC 29602